



All-In-One-Partner:

Our professionals are strong in producing series as well as smaller quantities. Modern machinery and extensive automation in the office and production result in efficiency. If you combine this with the many processing options under one roof, you get short lead times, increased quality and a versatile partner.



Machinefabriek JMBA:

- ISO 9001-2015
- EcoVadis sustainability recognition level Silver
- 50 employees
- 4800m2 net floor area

Operations:

- Machining
- Welding
- Sheet metal
- Finishing
- Assembly

Materials, mainly:

- Stainless steel
- Aluminium
- Plastics [Foodgrade]



Customers:

- Machine and equipment construction, Food-, Packaging-, Chemical-, Offshore-, Medical-, Environmental-, Solar-, & High-tech industries

August 2019 we moved to a new building equipped with all the facilities needed to operate properly and efficiently.

In addition to the existing machining, welding and assembly, a completely new sheet metal department has been set up with Mazak FiberLaser, LVD Toolcell Bending Machine and Finishing resources such as a blast cabinet and a TimeSaver for deburring, rounding and for setting grounding lines setting grounding lines Furthermore, the assembly department has also been rebuilt in an overpressure room allowing for clean work including the possibility of in-house ultrasonic cleaning.



Possibilities in brief

Full machine list available on request at info@jmba.nl or +31 493 - 501 500

Turning (11x):

- from 2-axis to 7-axis, dimensions up to $\varnothing 720$ and a length of 2000
- spindle passage up to $\varnothing 128$ and bar feed up to $\varnothing 92$, takeover spindles
- multitasking+robot loading up to $\varnothing 250$ and up to 240 kg product weight

Milling (7x):

- from 3-axis to 5-axis simultaneous with dimensions up to 3000x825x1100
- vacuum bed clamping, 5-axis simultaneous with dimensions up to 3100x2100x1100
- robot loading up to 160kg product weight with pallet handling or loose product loading

Welding (13x):

- ASME IX & ISO9606-1 certified, TIG and MIG
- vacuum welding including Helium vacuum leak test, backing gas
- small and large welding, welding manipulators, crane tracks

Sheet metal work:

- 6Kw Mazak FiberLaser, 3000x1500, stainless steel up to 25 thick
- 220ton LVD Toolcell press brake with a length of 4000 and Sheet followers up to 250kg
- Timesaver deburring, rounding, grounding line up to 1600 width
- blast cabinet 6000x4000x3000

Assembly:

- overpressure chamber with tools and testing equipment
- ultrasonic cleaning, laser engraving, Helium vacuum leak test

Measuring room:

- all types of gauges, measuring instruments and measuring machines
- 3D Zeiss 0.001 and Tesa and Mitutoyo, Helium vacuum leak test

Various processing operations:

- sawing, keyway cutting, rolling, pressing, cutting, drilling, tapping
- all surface treatments are provided

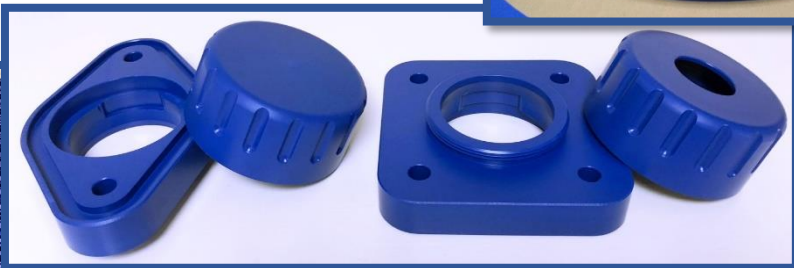
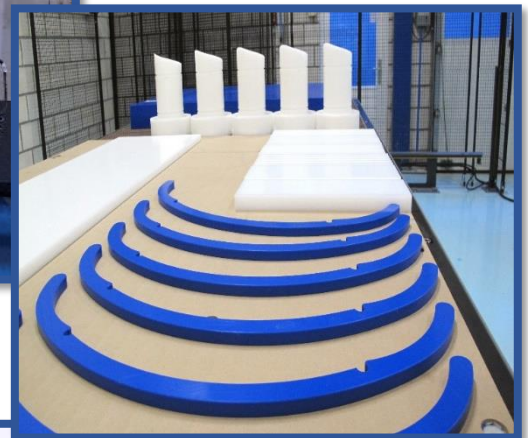
Software:

- Hypermill, Esprit, de Ridder IQ, SolidWorks and all common packages

Photo impressions on the following pages are a small cross-section of products we make.

Machining Plastics - Foodgrade

impressions



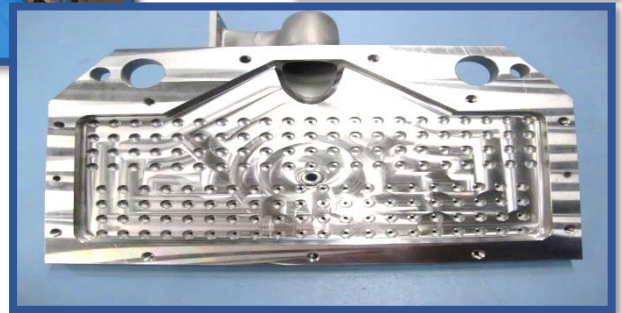
Machining

impressions



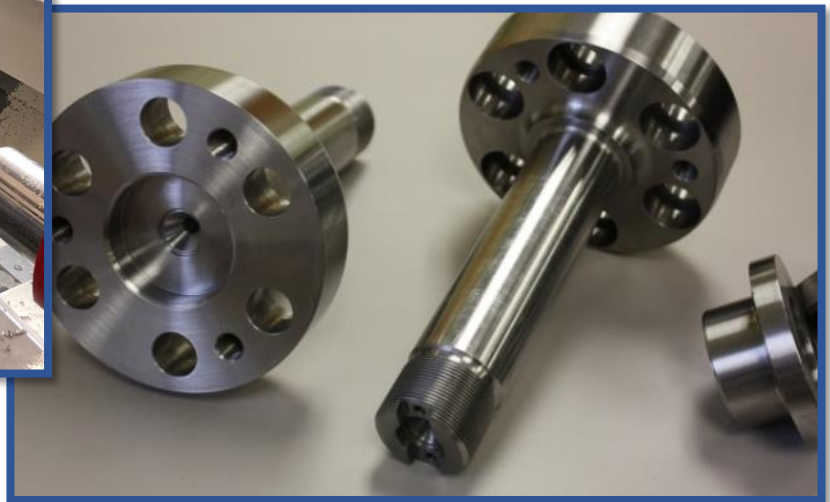
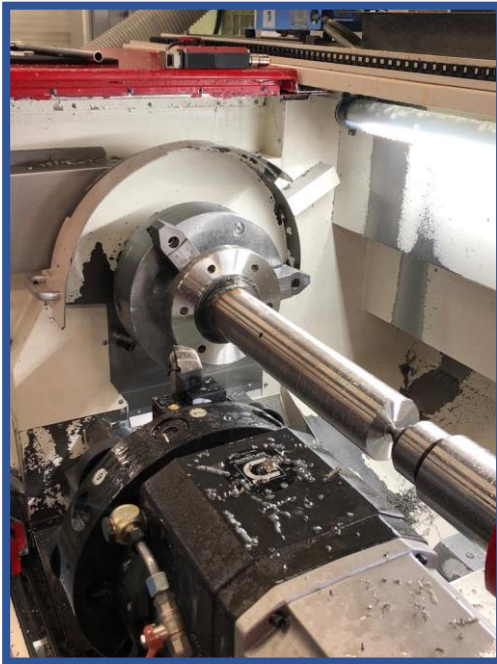
Machining

impressions



Machining

impressions



Machining

impressions



Sheet metal work - Welding - Finishing

impressions



Sheet metal work - Welding - Finishing

impressions



Sheet metal work - Welding - Finishing

impressions



Sheet metal work - Welding - Finishing

impressions



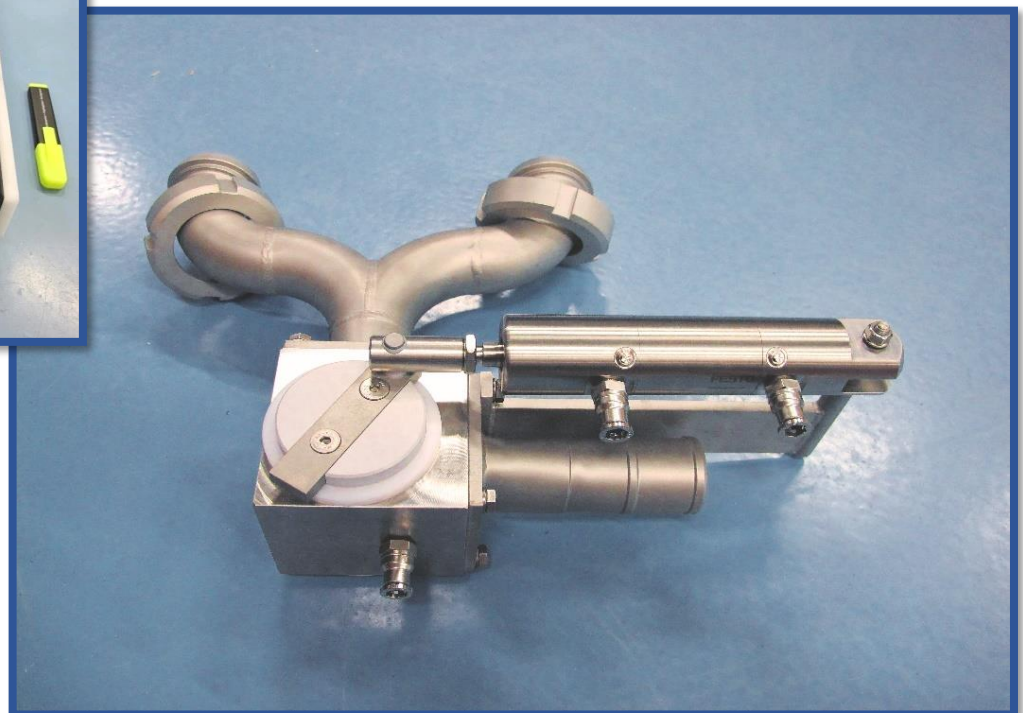
Assembly

impressions



Assembly

impressions



Quality control

impressie

